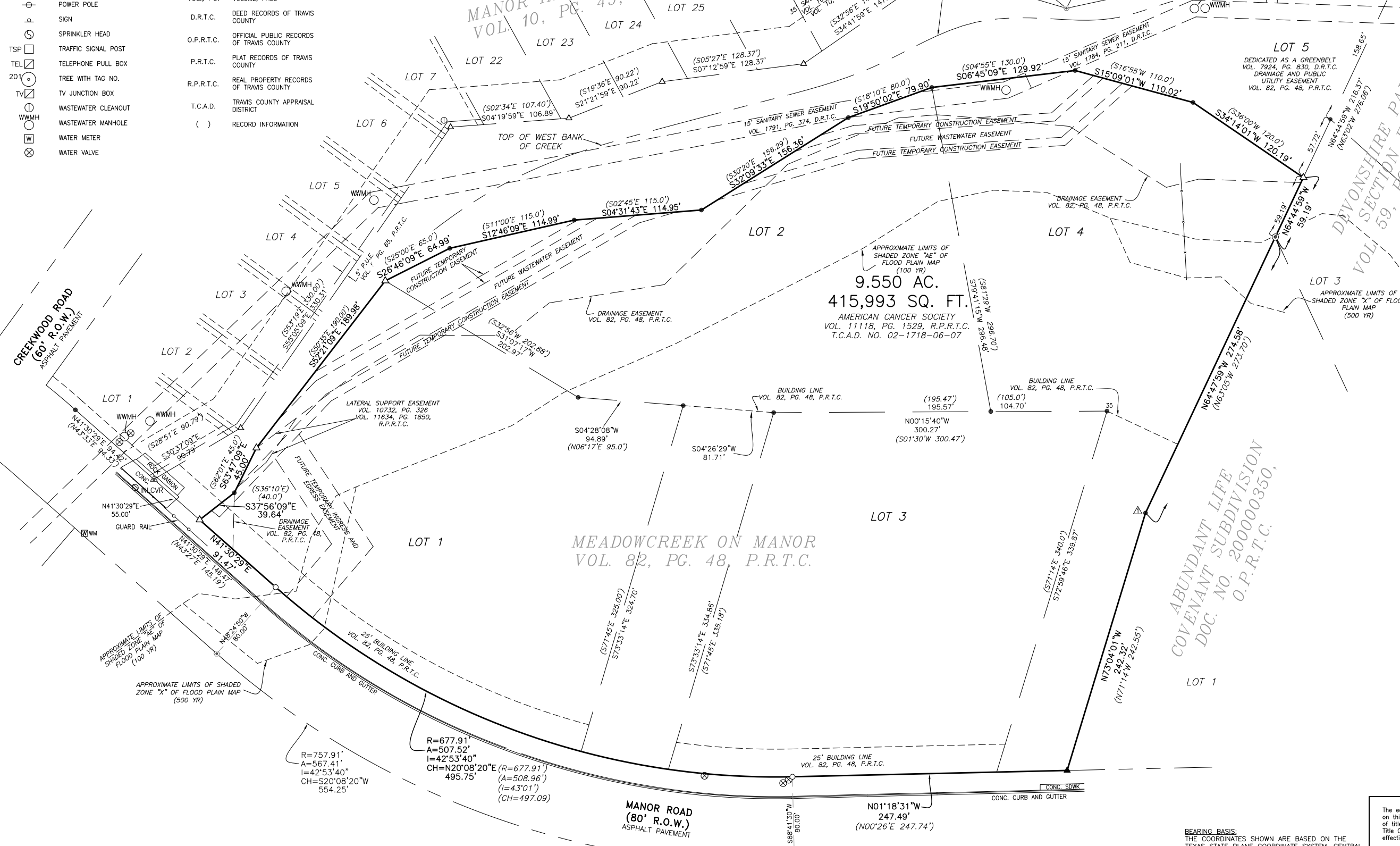


- POWER POLE
- SIGN
- SPRINKLER HEAD
- TSP
- TEL
- 201
- TV
- WWMH
- W
- ⊗

- VOL., PG.
- D.R.T.C.
- O.P.R.T.C.
- P.R.T.C.
- R.P.R.T.C.
- T.C.A.D.
- ( )

- VOLUME, PAGE
- DEED RECORDS OF TRAVIS COUNTY
- OFFICIAL PUBLIC RECORDS OF TRAVIS COUNTY
- PLAT RECORDS OF TRAVIS COUNTY
- REAL PROPERTY RECORDS OF TRAVIS COUNTY
- TRAVIS COUNTY APPRAISAL DISTRICT
- RECORD INFORMATION



9.550 AC.  
415,993 SQ. FT.  
AMERICAN CANCER SOCIETY  
VOL. 11118, PG. 1529, R.P.R.T.C.  
T.C.A.D. NO. 02-1718-06-07

MEADOWCREEK ON MANOR  
VOL. 82, PG. 48, P.R.T.C.

ABUNDANT LIFE  
COVENANT SUBDIVISION  
DOC. NO. 200000350,  
O.P.R.T.C.

R=757.91'  
A=567.41'  
I=42°53'40"  
CH=S20°08'20"W  
554.25'

R=677.91'  
A=507.52"  
I=42°53'40"  
CH=N20°08'20"E (R=677.91')  
495.75' (A=508.96')  
(I=43°01')  
(CH=497.09)

BEARING BASIS:  
THE COORDINATES SHOWN ARE BASED ON THE  
TEXAS STATE PLANE COORDINATE SYSTEM, CENTRAL  
ZONE, NAD83/93(HARN) THE BEARINGS SHOWN ARE

The easement on this title is effective